

NHS

IPEM

Institute of Physics and
Engineering in Medicine

There are
MORE PLAYERS
in your
RADIOTHERAPY
STORY



AHCS
Academy for Healthcare Science

**THAN YOU
MIGHT THINK...**

More information about the following organisations can be found online

www.ipem.ac.uk



@ipemnews

www.bir.org.uk



@BIR_news

www.ahcs.ac.uk



@AHCSUK

www.sor.org



@SCoRLondon

This leaflet was funded by IPEM and charitable donations

To request extra copies of this leaflet, please contact IPEM at
office@ipem.ac.uk

...including some you may never get to see face to face.



“We all work hard as one team to care for you and we think it’s time you got to know us a bit better”

MEDICAL STAFF

This group is made up of doctors, nurses, clinical support staff and others.

- Clinical Oncologists determine optimal cancer treatments including radiotherapy.
- Specialist radiotherapy nurses support your care.
- Our clinical support team help patients in many practical ways to keep you comfortable and reduce stress throughout your radiotherapy.



RADIOTHERAPY PHYSICISTS

Behind the scenes another group are working to provide safe, state of the art and accurate treatment.



Radiotherapy Physicists implement

- Scientific and technical support.
- Quality assurance of equipment to ensure it remains safe and accurate.
- The latest equipment, techniques and conduct research and development.

TECHNOLOGISTS & DOSIMETRISTS

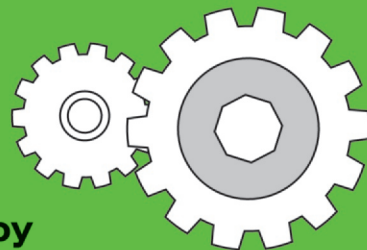
Physicists work alongside technologists and dosimetrists who perform treatment planning.

- They assist in checking equipment, quality assurance and patient dose verification.
- These staff also create shells and immobilisation equipment in the mould room.



ENGINEERS

The complex equipment used to deliver your treatment is maintained by a dedicated team of engineers and manufacturers.

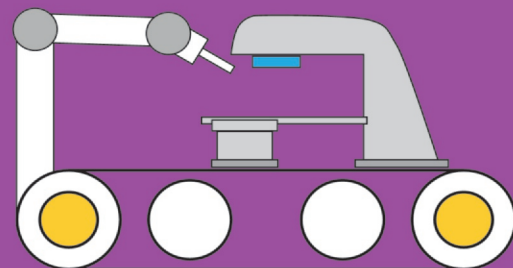


- Engineering and technical services work to maintain a high quality clinical service, minimising treatment downtime and treatment interruptions.
- They also respond to urgent service requests and work with manufacturers and physicists to precisely calibrate machines.

MANUFACTURERS

Medical device companies design, develop and manufacture state of the art equipment for radiotherapy treatment.

- Their service engineers perform planned preventative maintenance and troubleshooting.
- Additionally, they install and decommission equipment.

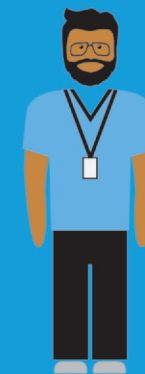


THERAPEUTIC RADIOGRAPHERS

These are the staff you will see most often, who perform many tasks throughout your journey and deliver your treatments.

Their activities include,

- Performing CT scans.
- As dosimetrists, providing treatment planning.
- Delivering radiotherapy on the treatment unit.
- Reviewing patients in clinic.
- Providing information and support across the radiotherapy treatment pathway.



OTHER RADIO THERAPY STAFF

Other staff and volunteers also support the work of radiotherapy.

- Assistant practitioners perform a range of clinical imaging and treatment procedures.
- Receptionists welcome you to the department and our administration team work behind the scenes looking after your records and appointments.
- Volunteers also help make your journey as smooth as possible.



OTHER HOSPITAL STAFF

Your radiotherapy treatment would not be possible without the other services provided by the hospital.

- Domestic services keep the department clean and hygienic for everybody.
- Porters help you move through the hospital to be at the right place at the right time. They also deliver goods to where they are needed.
- Where required, ambulance staff help transport you from your home to the hospital.



IPEM

Institute of Physics and
Engineering in Medicine

IPEM's Mission:

Improving health through Physics and Engineering in Medicine

IPEM's Vision:

Developing the professional, improving healthcare, transforming lives together

IPEM's Values:

Trusted - The leading voice in improving health through physics and engineering
Inclusive - Enabling a diverse and inclusive professional community
Progressive - Delivering innovative practice development for the public good

IPEM is a registered charity No.1047999