



# IPEM news

## January 2019



This month, President Mark Tooley talks about:

- NHS Long Term Plan
- Communities of Interest

[President's Blog](#)



## Join the Communities of Interest

Join the new online Communities of Interest, which have gone live. They make it easier for members to join discussions and activities and combine the benefits of a mailbase, a networking platform and a resource library, using the latest, up-to-date software. Read more [here](#).

[Join Here](#)

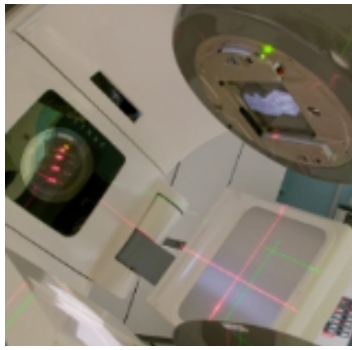
## The Great IPEM Short Story competition!

IPEM has launched a short story competition for all you budding creative writers out there! We want you to produce an original story of up to 1,000 words featuring some element of your scientific work or experience.

IPEM Trustee and Fellow Dr Anna Barnes and Fellow Jo Young came up with the idea as a way to engage young people about the work of members.

There are two categories to enter: a story aimed at children under the age of 11 and those aged 11 to 16. Read more [here](#) and the full terms and conditions are [here](#).





## New radiotherapy service specifications

IPEM has welcomed NHS England's publication of new service specifications for the delivery of radiotherapy services.

[IPEM Statement](#)



### IPEM and the NHS Long Term Plan

IPEM has responded to the publication of the NHS Long Term Plan and its implications for the medical physics and clinical engineering community.

[Read Here](#)



### Route 2 support

Members on Route 2 training can apply for an External Advisor to help mentor them through their training. There is no charge for this support.

[More Here](#)



### IPEM response to Migration Advisory Committee

IPEM's Workforce Intelligence Unit has responded on behalf of the Institute to the MAC on the shortage occupation list regarding medical physics and clinical engineering.

[More Here](#)



### Changes to MEP access

Elsevier has changed the way Full Members and Fellows access MEP. You now need to create a profile on ScienceDirect, Elsevier's platform for peer-reviewed literature.

[More Here](#)

### New IPEM ebooks

Three new IPEM ebooks are available to Full Members and Fellows to download for free for a limited time.

Latest ebooks



### Free ebook download

To help mark World Cancer Day on Monday 4 February, the IPEM ebook *Design and Shielding of Radiotherapy Treatment Facilities* is available to **all** members to download for free until 10 February.

Download Here



### Little Linac latest

The Little Linac project to give every child undergoing radiotherapy treatment a free toy brick model, is going from strength to strength. It was recently featured on ITV News in Yorkshire and in the national press.

Little Linac



### The Lottie Tour!

IPEM is participating in the Lottie Tour, which is organised by the Women's Engineering Society. Lottie is a doll who travels around the country to visit women who take pictures of her at work and therefore promote the amazing and varied careers available in engineering. Learn more about the Lottie Tour and how to take part.

Lottie Tour

## 'No-deal' Brexit inquiry

IPEM submitted written evidence to the House of Commons Science and Technology Committee - Brexit, Science and Innovation: Preparations for 'No-Deal' [inquiry](#).



[IPEM Response](#)



Medicines &  
Healthcare products  
Regulatory Agency

## MHRA on No-deal Brexit legislative proposals

The MHRA has published updated guidance on the regulation of medicines, medical devices and clinical trials if there's no Brexit deal.

[Read Here](#)

## RCP and RCR membership

Did you know Fellows and Full Members can apply to become an Affiliate Member of the Royal College of Physicians or an Associate Member of the Royal College of Radiologists?



[More Here](#)



## Mentoring scheme

IPEM currently has four mentors and six members being mentored. We are in urgent need of more Fellows to volunteer as mentors in all areas of our diverse work. The work is not too onerous and is highly rewarding, generally helping younger, early or mid-career members of the Institute to progress. The aim is to allocate a mentor to a single person who requires mentoring at any one time.

[Become a Mentor](#)

## Network news

See updates on:

- Induction and specialism day
- Trainee Community of Interest
- STP deadline and survey

[Read Here](#)



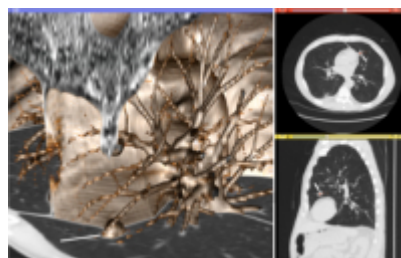
### Nuclear medicine survey

The Workforce Intelligence Unit is carrying out a survey of the nuclear medicine workforce. This is intended to be complementary to the British Nuclear Medicine Society (BNMS) survey and so only those services who have been unable to respond to the BNMS survey should take part. If you think you should have received an invitation to respond but have not, then please respond below.

[Take Survey](#)

### Clinical computing survey

The Informatics and Computing SIG is conducting a survey to find out more about clinical computing activities. All those involved in clinical and scientific computing work are invited to take part. The survey is interested in the full range of computing activities, not just software development. Everyone working in this field, whether they are IPPEM members or not, are invited to take part.



[Take survey](#)

- [Medical Physics International](#)
- [Vacancies on EFOMP Working Groups](#)
- [IUPAP Young Scientist Award in](#)





[Medical Physics](#)

- [ESMPE in Prague, 4 - 6 July](#)
- [EUTEMPE training modules 2019](#)
- [ENEN+ project European Nuclear Mobility grants](#)



**IPeM**

Contact Us

Connect with us:



A Company Limited by Guarantee in  
England and Wales Registered Number  
3080332 Registered Charity Number  
1047999



**IPeM**

Registered Office | Fairmount House |  
230 Tadcaster Road | York | YO24 1ES

[Unsubscribe](#) [Update subscription preferences](#) [To view without cookies click here](#)