

Contact Us

New and revised policy and position statements

IPEM has recently published two revised policy statements on 'The Role of the Clinical Scientist in Medical Lasers and Optical Non Ionising Radiation' and 'Leading Medical Physics and Clinical Engineering Services', and a new position statement on 'The use of role titles such as 'Associate Physicist' to describe scientists working as Medical Physicists and Clinical Engineers in clinical environments'.



Read Here



John Mallard Award

Do you know an IPEM member who you think would be a suitable candidate for the Institute to nominate for the John Mallard Award for excellence in medical physics? The award is presented by the International Organization for Medical Physics and the inaugural one was won by IPEM member [Professor Paul Marsden](#). Read more [here](#) and nominations need to be made by 11 March.

Nominate Here



National School of
Healthcare Science



Calling PhD students, post-docs and trainees!

Would you like to help shape a new Mayneord Phillips Educational Programme, to replace the former Summer

Review of National School training curricula

IPEM has sent in a formal expression of interest to be involved in the National School for Healthcare Science review

Professional Dilemmas and Safe Practice workshop

A workshop exploring these important issues for members is taking place on 1 May in London. With speakers

Schools focused on medical physics? IPEM, the Institute of Physics and the British Institute of Radiology are holding a workshop in London on 15 April to explore your needs and what this new programme could offer to meet them. If you would like to contribute, email Rosemary Cook CEO.

of the training programme curricula. We will be looking for members with an interest in training and educational matters to contribute to this. If this is you, email Rosemary Cook CEO.

including the HCPC, IPEM's Professional Conduct Committee Chair and 'Protect' (formerly Public Concern at Work), this workshop was requested by members, and will answer the questions that members have sent in..

[Email Rosemary](#)

[Email Rosemary](#)

[Book Here](#)



Medals, prizes and awards

There are a range of IPEM medals, prizes and awards across a range of sectors including academic, healthcare and innovation, and for members in different stages of their career. We want to recognise your work, your expertise and your contribution!

[Apply Here](#)

CPD audit coming

The 2019 CPD audit process, for CPD activities undertaken in 2018, will commence in the first week of March, with emails being sent to those selected for audit. This is the first year where it is mandatory to provide your submission using the mycareerpath® software. Sign up to [mycareerpath®](#) NOW for the easiest way to record your CPD.

[More Here](#)



MPEC 2019

Bristol plays host to MPEC 2019 from 23 – 25 September and now is the time to start



submitting your abstracts for this multi-disciplinary meeting. Held across three days, the first day is our popular free to attend Members' Day. This is followed by two full days of scientific content, including specific trainee sessions and some excellent key note speakers. Abstract submission deadline is **31 March**.

[MPEC Abstracts](#)

The Great IPEM Short Story competition!

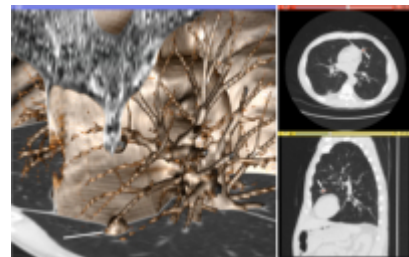
IPEM has launched a short story competition for all you budding creative writers out there! We want you to produce an original story of up to 1,000 words featuring some element of your scientific work or experience.

There are two categories to enter: a story aimed at children under the age of 11 and those aged 11 to 16. Read the full terms and conditions [here](#). The first stories are already in - be sure to get your story in too!



Clinical computing survey

The Informatics and Computing SIG is conducting a survey to find out more about clinical computing activities. All those involved in clinical and scientific computing work are invited to take part. The survey is interested in the full range of computing activities, not just software development. Everyone working in this field, whether they are IPEM members or not, are invited to take part.



[Take Survey](#)

- [BNMS spring meeting](#)
- [BIR position statement on Guidance for non-medical referrers to radiology](#)
- [Clinical Movement Analysis Society](#)



[meeting in Sheffield](#)

- [RCR's Timely delivery of radical radiotherapy guidelines](#)
- [Registration for EEB exams 2019 is open](#)
- [MEDICON 2019](#)

Independent assessors wanted

The University of the West of England's first cohort of Clinical Engineering degree apprentices are graduating this year. As part of their End Point Assessment the university is looking to recruit experienced medical and radiation engineers to act as (paid) independent assessors. If you are interested in getting involved, contact Dr Antony Hill, Applied Sciences Academic Director.



[Email Antony](#)



Women & Leadership International

Women & Leadership International is administering a national initiative to support the development of female leaders across the UK's professional & technical sector. The campaign is providing women with grants of up to £1,000 to enable participation in a leadership development programme.

[More Here](#)



[Contact Us](#)

Connect with us:



A Company Limited by Guarantee in
England and Wales Registered Number
3080332 Registered Charity Number
1047999



Registered Office | Fairmount House |
230 Tadcaster Road | York | YO24 1ES

[Unsubscribe](#) [Update subscription preferences](#) [To view without cookies click here](#)