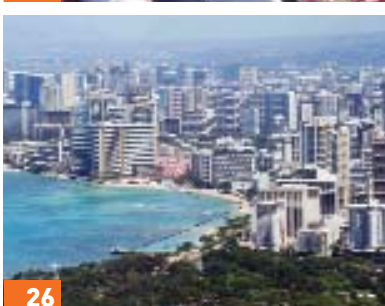
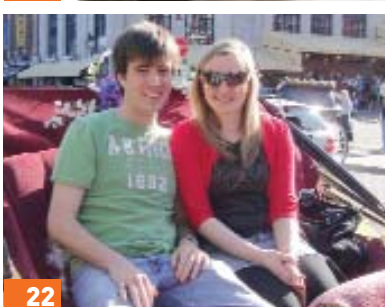


THIS ISSUE

**08 COVER FEATURE**

**RELIABILITY ENGINEERING**

Fundamentals of reliability analysis using failure statistics and the Weibull cumulative probability distribution function



**16 UNSUNG HEROES RECOGNISED FOR THEIR SERVICE CONTRIBUTION**

The Clinical Engineering Team of the Year Award introduced to recognise the valuable contributions clinical engineers make to the healthcare industry

**20 ORGANISING A JOINT MEETING**

Some useful tips for IPEM members who might be considering organising a joint meeting for the first time

**22 TRAVEL REPORT**

A report following a research visit to McGill University, Montréal, May–June 2009, funded by an IPEM bursary

MEETING REPORTS

**24 CURRENT STATE AND FUTURE DIRECTION OF IMAGING TECHNOLOGY**

Laura White

**26 ISMRM: 17TH SCIENTIFIC MEETING AND EXHIBITION**

Geoffrey Payne

**32 FLUOROSCOPY: NEW APPLICATIONS AND ISSUES**

Jane Lynch

**36 MANAGEMENT OF GRANT FUNDED RESEARCH**

Alan Perkins and Iain Chambers

**37 ALL WALES SUMMER MEETING**

Ryan Lewis and James Williams

**39 THE 56TH SOCIETY OF NUCLEAR MEDICINE ANNUAL MEETING**

Charalampos Tsoumpas

**40 THIRD MALMO CONFERENCE ON MEDICAL IMAGING**

B. Michael Moores

REGULARS

**03 PRESIDENT'S LETTER** Welcome to all readers

**05 EDITORIAL** Engineering theme

**06 NEWS** Stories in the media from Christie McComb

**44 INTERNATIONAL NEWS** International conferences and online resources

**46 MEMBERS' NEWS** Including IPEM conferences and exam results

**48 BOOK REVIEWS** Introducing the new book review editors