

# In2scienceUK | Programme Summary

## 2022



Improving Social Mobility and Diversity in STEM



# Our Mission

The In2scienceUK programme provides disadvantaged Year 12 students with the support, skills and experience needed to achieve their potential and progress to degrees, apprenticeships and careers in science, technology, engineering and maths (STEM).

The young people we support are interested in pursuing STEM, but face barriers to their progression including a limited understanding of the careers available within the sector, a lack of friend and family connections who can advise them and help them to access opportunities such as work experience as well as inadequate support needed to produce successful applications for apprenticeships or degrees.

Our programme connects students to volunteers from different fields within STEM over the summer between Year 12 and Year 13, the time when they are finalising their decisions about university or apprenticeships. Students receive insights and knowledge through in person work experience and live webinars. The In2scienceUK team works closely with its volunteers to develop and deliver engaging sessions. This support enables students of all backgrounds and abilities to build the skills, knowledge and confidence to produce successful applications and achieve their ambitions within STEM.



# In2scienceUK Students

## Student Eligibility

Our programme is free for students to participate in, and they also receive a bursary to cover their expenses. Students are required to fill out an application form, from which we shortlist them for an interview. To be eligible for a place participants must meet the following criteria:

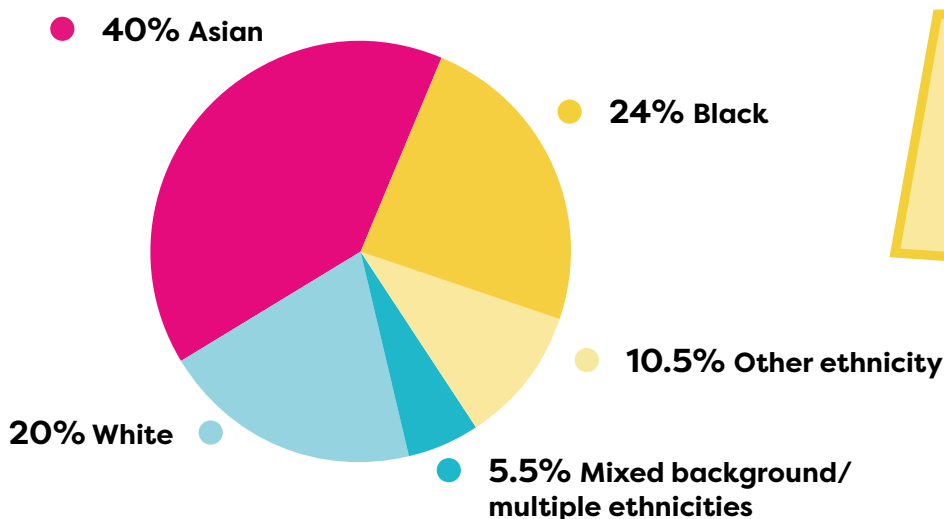
- Attend a non-fee paying state-maintained school
- Be 16 or over and a current Year 12 student or equivalent
- Must be studying at least one STEM-related A-Level, BTEC or equivalent

In addition, to be selected for interview students must also meet at least one of the following criteria:

- Recipient of Free School Meals (FSM) in Year 11 or at sixth form
- Have parents or carers with no higher education degree
- Current recipient of EMA or Pupil Premium
- Have an Education Health and Care Plan (EHCP) at school
- Are currently, or have ever been, in care
- Currently live in a POLAR4 Q1 or Q2 Neighbourhood

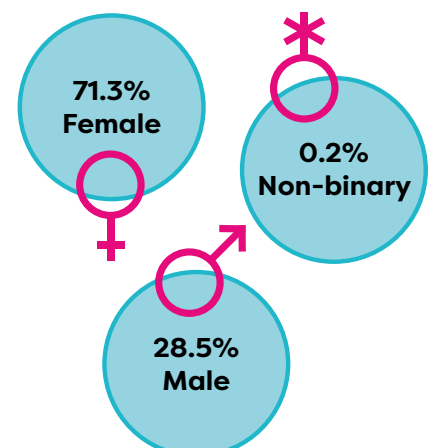
Following interviews, places are offered based on student disadvantage and suitable host availability.

## 2021 Student Demographics



**82%**  
no family history of  
higher education

**70%**  
receive free school  
meals



# 2022 Programme

Catering to the interests and career aspirations of our participants, the summer 2022 In2scienceUK programme will deliver:

- **1 or 2 week in-person work placement.** Students will be matched in groups of up to three with a volunteer host whose work is of interest to them. They will spend 1 or 2 weeks at the host's workplace, building relationships and gaining experience and understanding to support them in making informed decisions about their own career pathway.
- **Online skills, employability and careers workshops.** A programme of webinars delivered by our partner organisations will provide support in skills such as personal statement writing, university admissions advice, CV writing and interview tips, university finance and STEM careers panels.
- **Public engagement competitions.** A chance for students to develop their skills in written and visual communication, have fun and win prizes!

In addition, to foster a collaborative environment the students also participate in:

- **Induction and skills day.** Students will come together locally before the programme begins to learn some key skills they will need, and giving them a chance to interact with each other.
- **Celebration event.** To round off the programme, we will host in-person celebration events in key regions in recognition of the hard work and dedication from students and volunteers. Attendees from across the In2scienceUK community will have the opportunity to interact whilst we award certificates, competition prizes and reflect on outcomes of the summer programme.



Induction and skills day



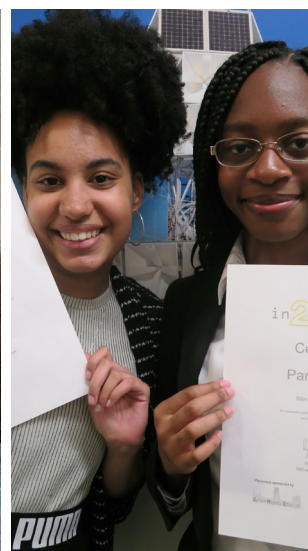
1 or 2 week in-person placement



Online skills, employability and careers workshops



Public engagement competitions



Celebration event

# 2022 Programme Timeline

## VOLUNTEERS

### RECRUITMENT

[Online volunteer applications open](#)

Information asked for in application:

- Personal details
- Your place of work
- Your area of expertise
- Availability and capacity
- Risks and sensitivities
- Consent

Volunteer applications close

### MATCHING

Applicants' expertise, location and availability matched to suitable student/s or notified otherwise

Admin requirements if matched:

- Complete risk assessment
- Read and adhere to our safeguarding policy
- DBS check carried out if lone working with students
- Any other additional requirements needed from workplace for access

### INDUCTION

Online training and induction

### SUMMER PROGRAMME

Volunteers host work placements

Celebration event

## STUDENTS

### RECRUITMENT

[Online student applications open](#)

Student applications close

### MATCHING

Students shortlisted and interviewed

Students matched to volunteer host in groups of up to three and offered place on programme

### INDUCTION

Induction and skills day

Given access to online platform

### SUMMER PROGRAMME

Student participation in online workshops, placements and competitions

Celebration event

November 2021

April 2022

May

June

July

Late July

August

September

# Programme Benefits

## Students

At In2scienceUK we are driven by our impact, and survey our participants before and after they take part in our programme. Key achievements from 2020:

22%  
increase

**83%**

“I know where to get support and advice about the university application process”

**79%**

29%  
increase

“I understand the content and structure of a range of STEM degrees”

**77%**

14%  
increase

“I know quite a lot about STEM”

“STEM is definitely something I see myself going into. I have always enjoyed science but this programme took it to another level! My experience really opened my eyes to key issues in society and I feel armed with so many skills to talk about in interviews and build on in the future. My aspirations are to go onto university and hopefully to carry out more health related research on larger scales.”

**Grace, 2021 Participant**

“I understand the indecisiveness that young people face at this turning point of their life and wish I had been provided with guidance at that age. I wanted to use my experience to help them gain insight and soothe their fears when thinking about choosing their career. It is incredibly fulfilling to provide insight to young people and is a rewarding experience to witness the outcome.”

**Mahboub Merzouk, NMR Senior Technician, 2021 Volunteer**

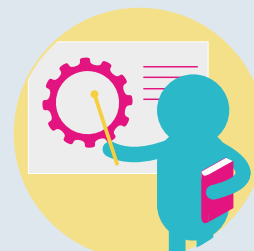
## Volunteers

Through contributing to our programme, we make it easy for volunteers to create a lasting impact on the lives of young people and be the role model they themselves would have wanted at their age.

**Volunteering for In2scienceUK you will:**



Receive expert training and support



Gain skills and experience communicating with young people



Promote diversity and inclusion in STEM



Be a role model and **make a real difference**

Volunteers receive a certificate of participation which can be used as evidence of public engagement, and we can also write letters of recommendation. They also have fun doing it!



In<sup>2</sup>science<sup>UK</sup>



Visit our [website](#) or contact us at [info@in2scienceuk.org](mailto:info@in2scienceuk.org) for more information

**In2scienceUK** is a registered charity (1164821)  
and company (07706662) in England and Wales

**Our registered address:**

10 Queen Street Place, London EC4R 1BE

Front cover photo by 2021 student Matas, taken on their In2scienceUK placement day